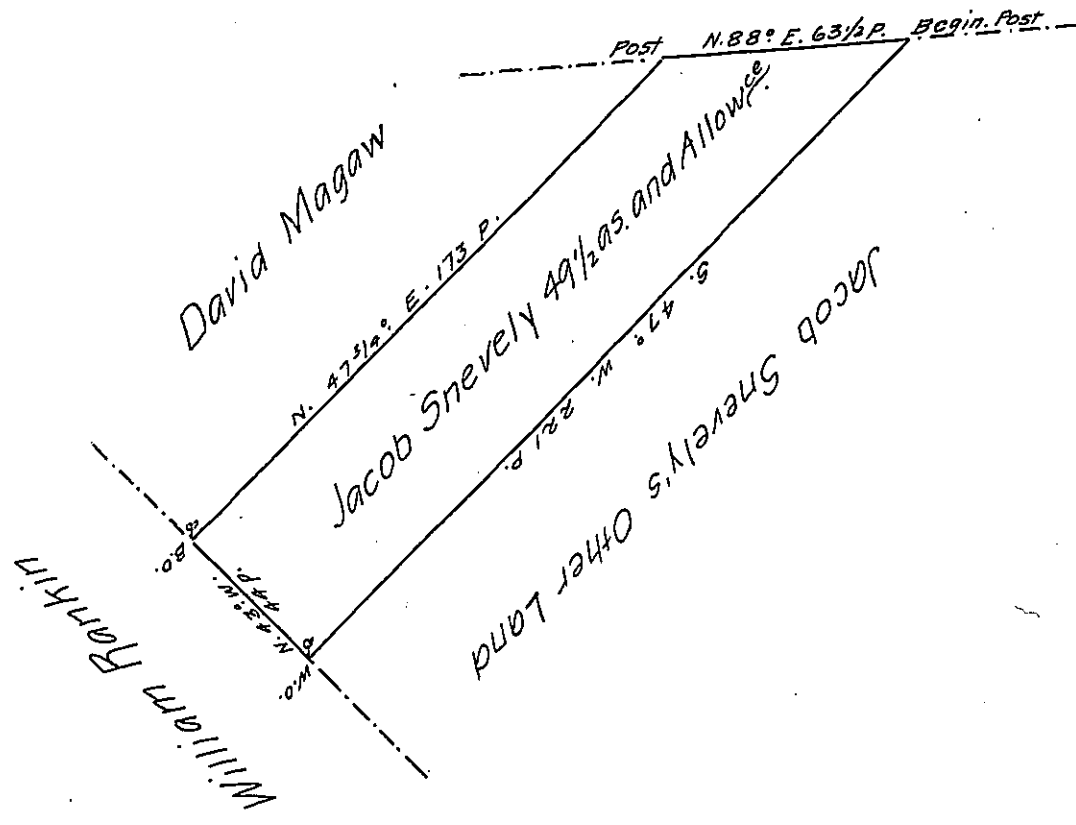


John Gingrich



A Draught of a Tract of Land Situate in Antrim Town-
 ship Cumberland County containing Forty nine and one half acres and
 an Allowance proportional to Six acres p. Cent for Roads - Survey'd for
 Jacob Snevely the 31st. Day of December 1768, in pursuance of the Honor-
 able Proprietaries Warrt. Dated the 11th. Day of August 1746.

John Armstrong D.S.

To John Lukens Esqr. }
 Surveyor General }

IN TESTIMONY that the above is a copy of the original remaining on file in
 the Department of Internal Affairs of Pennsylvania, made
 conformably to an Act of Assembly approved the 16th day of
 February, 1833, I have hereunto set my Hand and caused
 the Seal of said Department to be affixed at Harrisburg,
 this tenth day of November 1906.

George P. Simon
 Secretary of Internal Affairs.